

MCC Restoration – SSL-VPN Setup Instructions

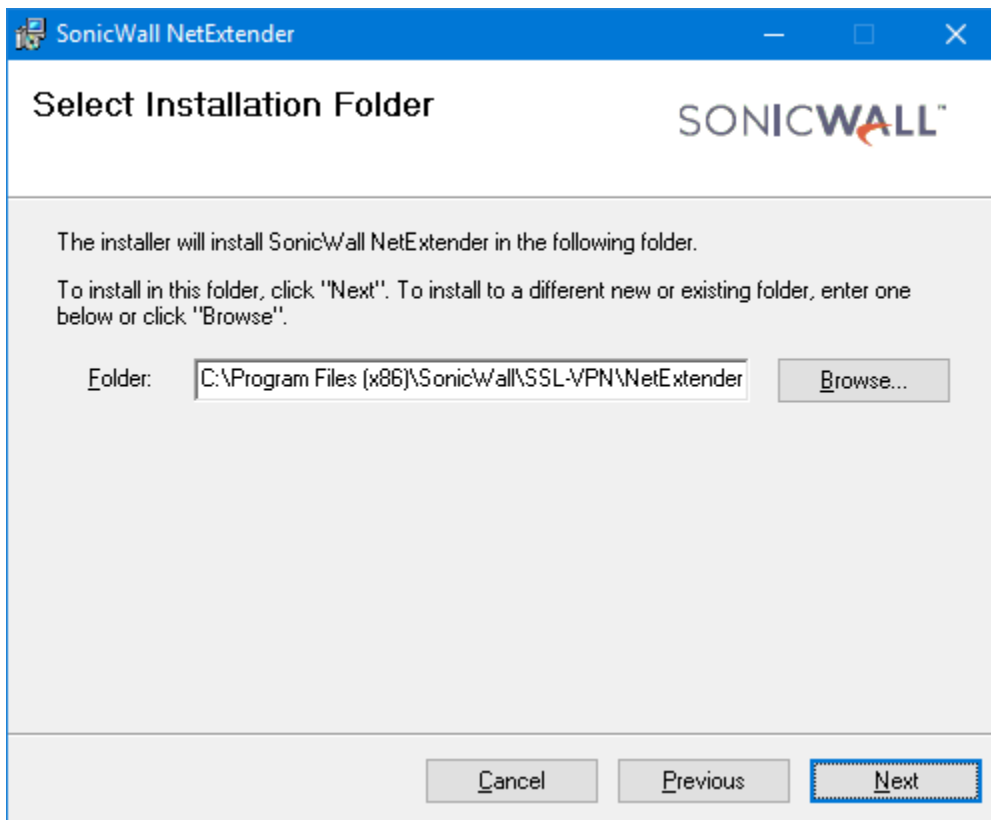
1. Open a web browser and go to <https://www.sonicwall.com/products/remote-access/vpn-clients/>. Click on the Download button under the appropriate operating system, then run the file after it has downloaded.
2. Click NEXT at the beginning of the Setup Wizard (this install process will only need to be done once)



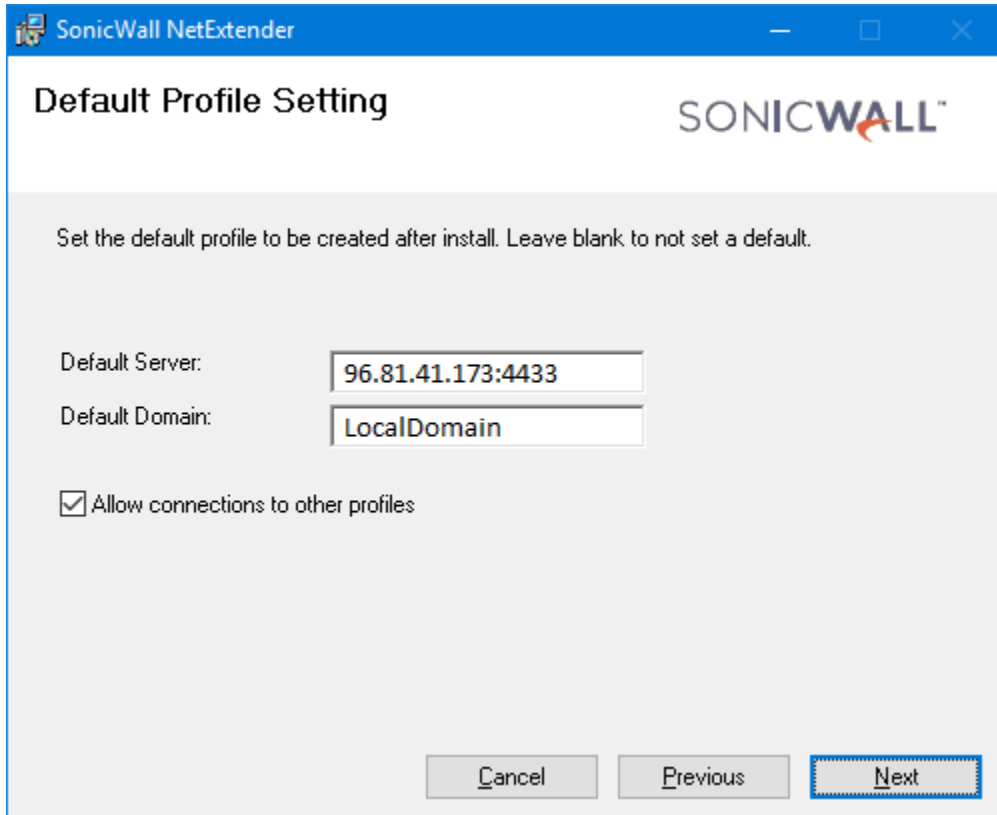
3. Click "I Agree" then click NEXT



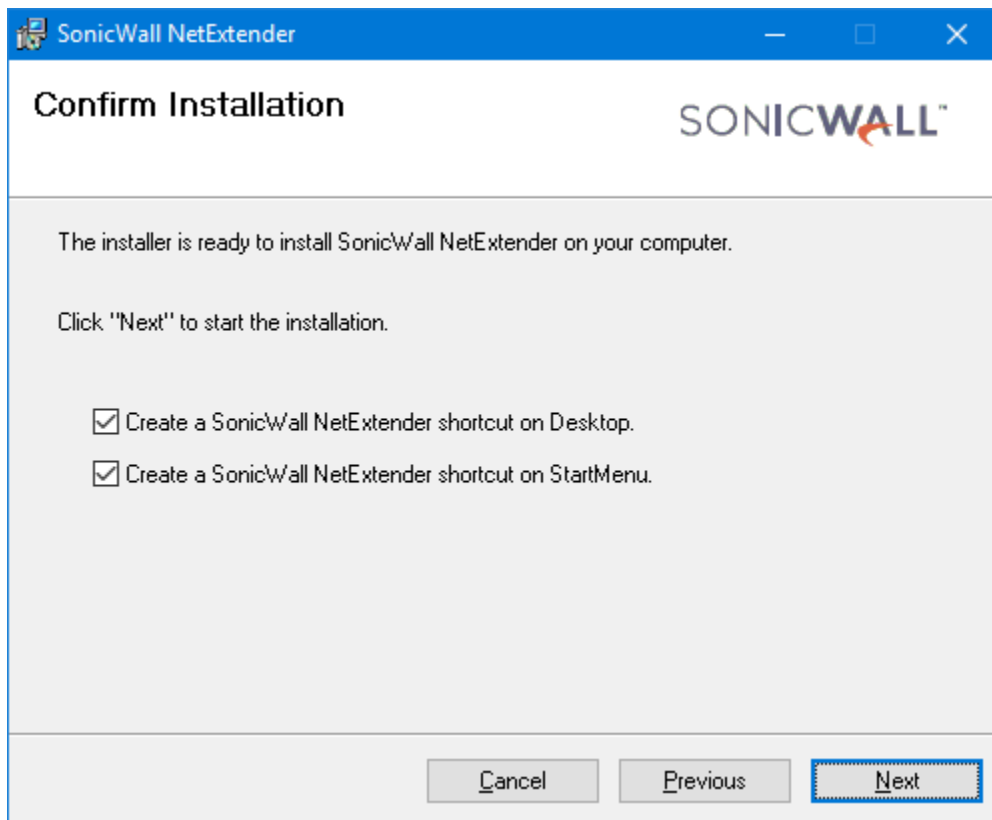
4. Leave the install folder as the default value, then click NEXT



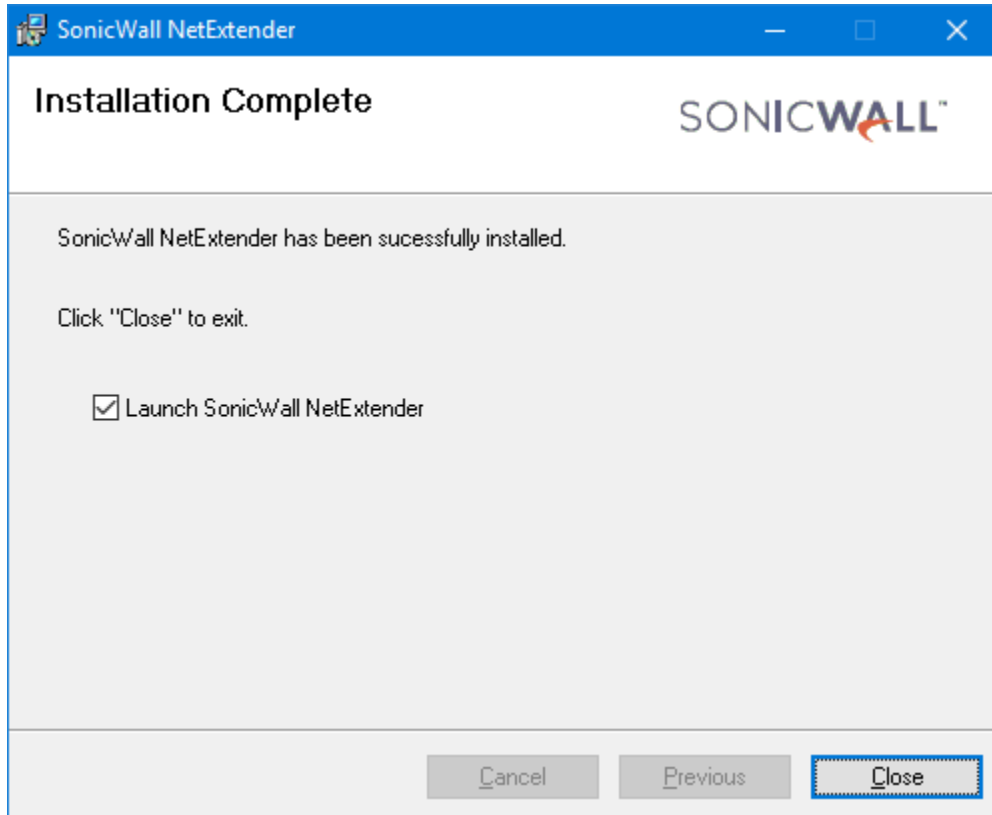
5. Enter the Default Server: 96.81.41.173:4433 and Default Domain: LocalDomain, then click NEXT



6. Then click NEXT to have the system add shortcuts for later access

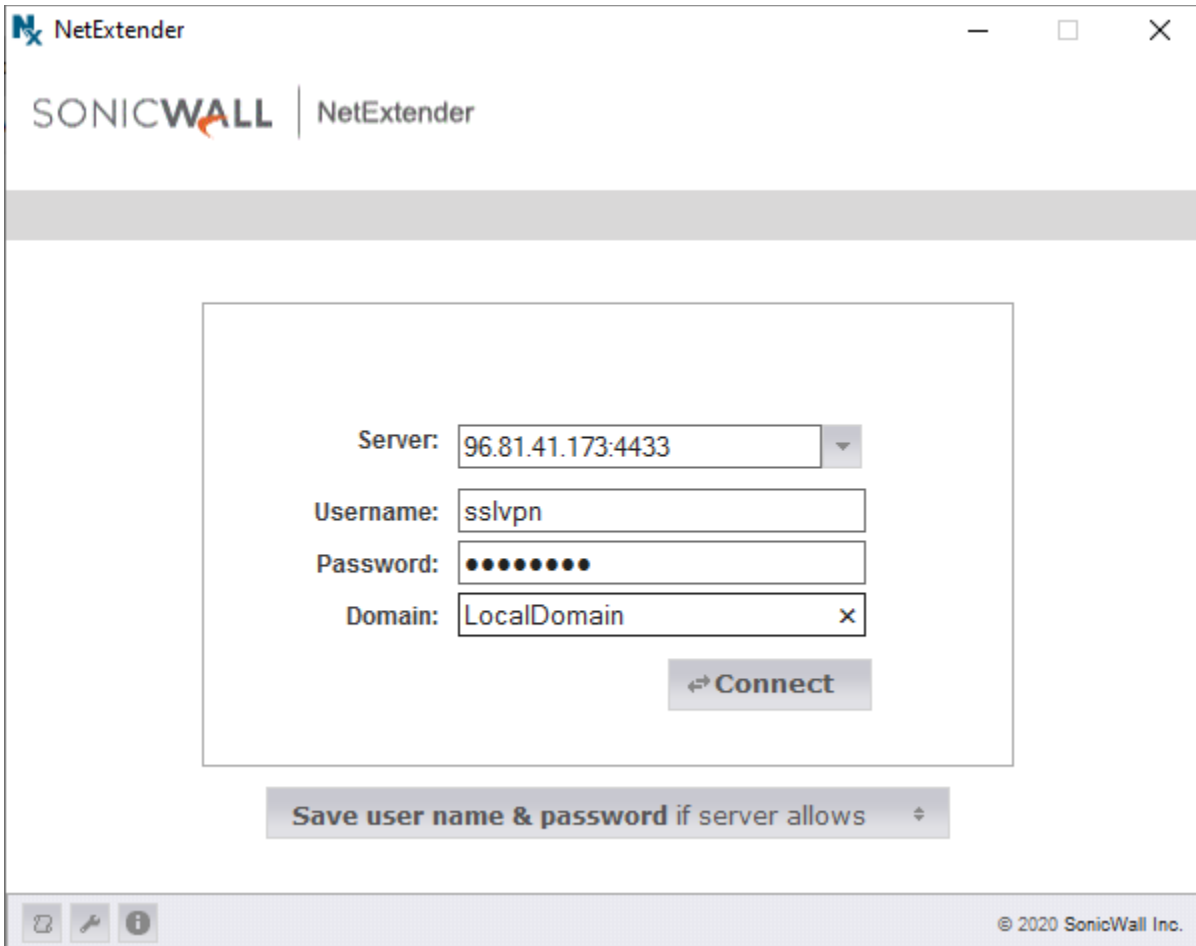


7. After installation, click Close.



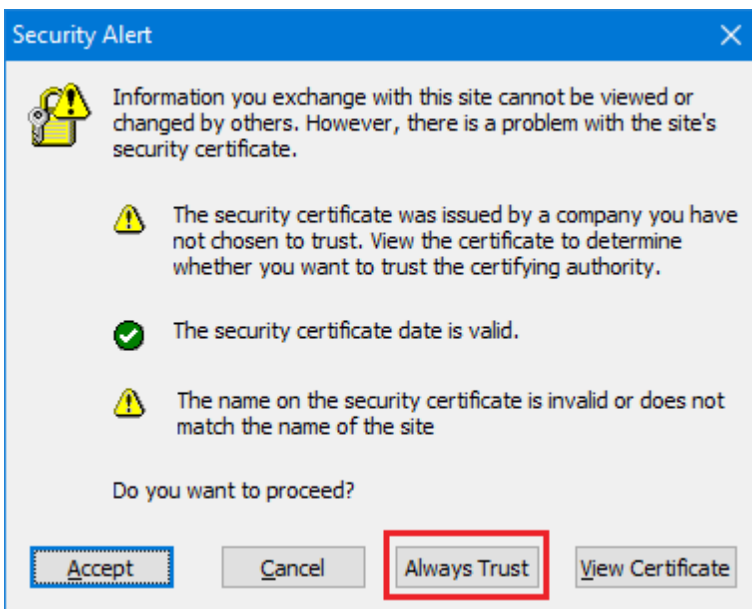
After install, reboot the computer! This is important as it may not ask and maybe necessary before the program will function properly.

8. When connecting to the server, use the following (Your Manager will have the password), then click CONNECT. Verify the address is **96.81.41.173:4433**, enter **sslvpn** and your password, and the domain is **LocalDomain**.



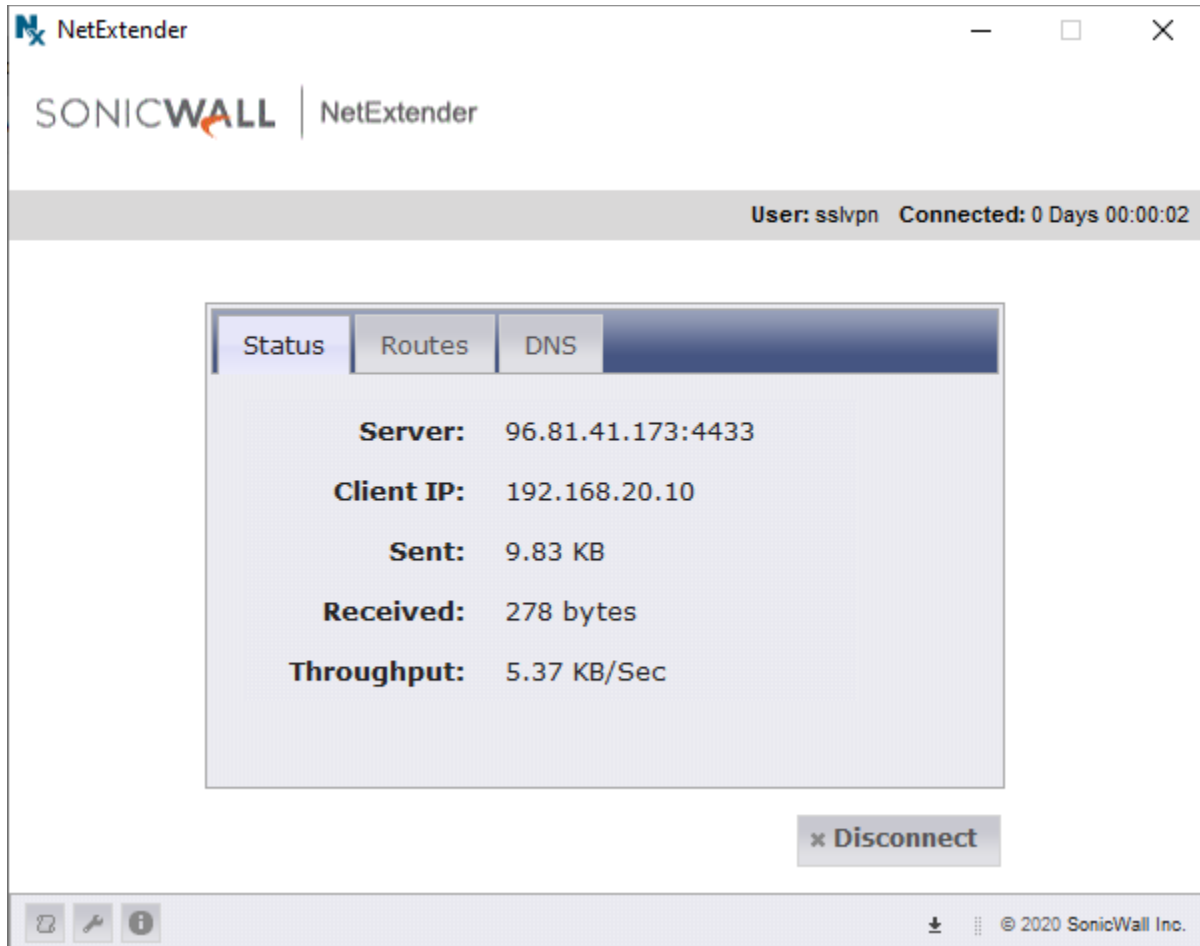
The screenshot shows the SonicWall NetExtender connection interface. At the top, the SonicWall logo and 'NetExtender' text are visible. The main area contains a form with the following fields: 'Server' with the value '96.81.41.173:4433', 'Username' with 'sslvpn', 'Password' with masked characters, and 'Domain' with 'LocalDomain'. A 'Connect' button is located below the form. At the bottom of the form area, there is a checkbox labeled 'Save user name & password if server allows'. The bottom of the window shows standard OS window controls and a copyright notice for SonicWall Inc. © 2020.

9. Click "Always Trust" to the Certificate screen



The screenshot shows a 'Security Alert' dialog box with a blue header and a close button. The main text reads: 'Information you exchange with this site cannot be viewed or changed by others. However, there is a problem with the site's security certificate.' Below this, there are three bullet points: a warning icon indicating the certificate issuer is not trusted, a checkmark icon indicating the certificate date is valid, and a warning icon indicating the certificate name is invalid. At the bottom, the question 'Do you want to proceed?' is followed by four buttons: 'Accept', 'Cancel', 'Always Trust' (which is highlighted with a red box), and 'View Certificate'.

10. After the reboot from the first install, you should now be able to connect. To disconnect the session, click the “Disconnect” button. During your session, you can minimize this screen while you work.



11. After the VPN connection has been established, you can open an RDP connection to the Server @ 192.168.0.10.

